

# DF110GKB零件目录图册

## DF110GKB PARTSLIST



### FOREWORD

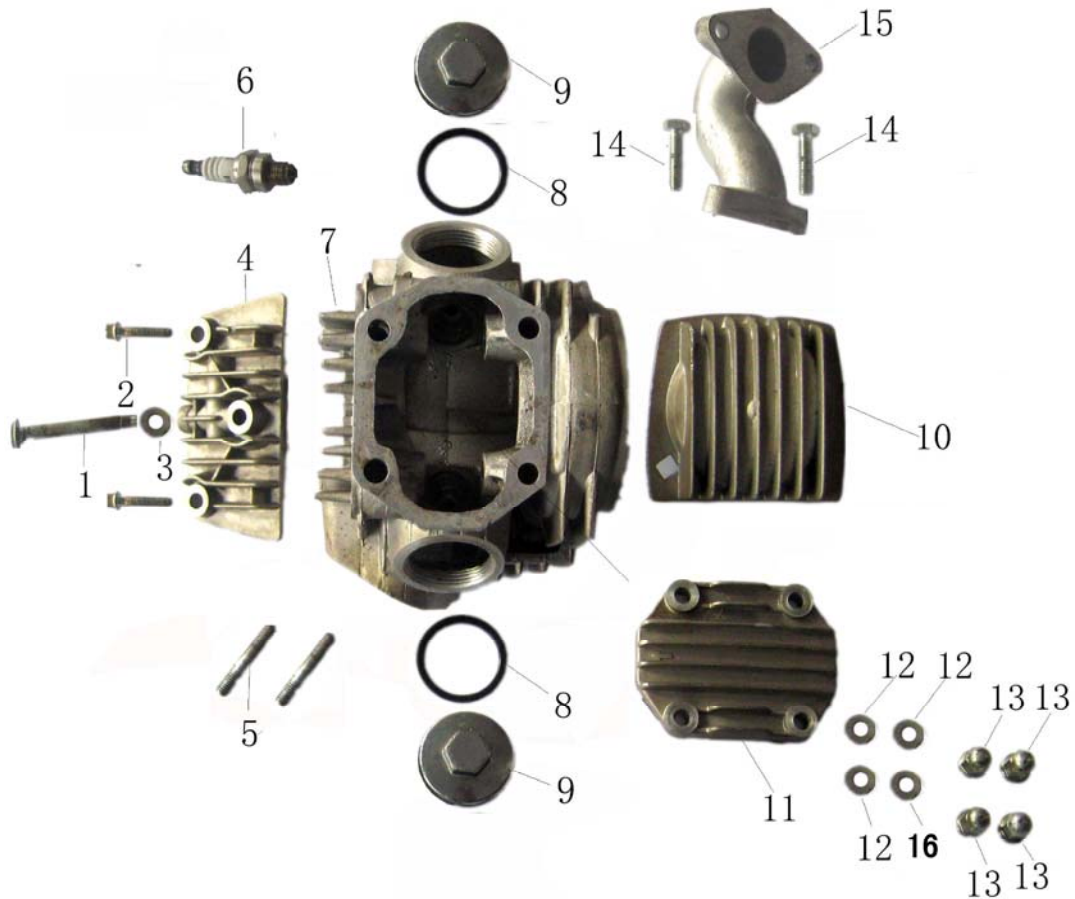
When you are going to order parts you may take this booklet as reference but any differences please take the reality on vehicle as standard. To find out the name, Item

code or fitment you may check in the illustration with the size and appearance .Then with the no. in the illustration you will find out the name, item code and quantity.

There will no notice to you ahead of any change of the information in

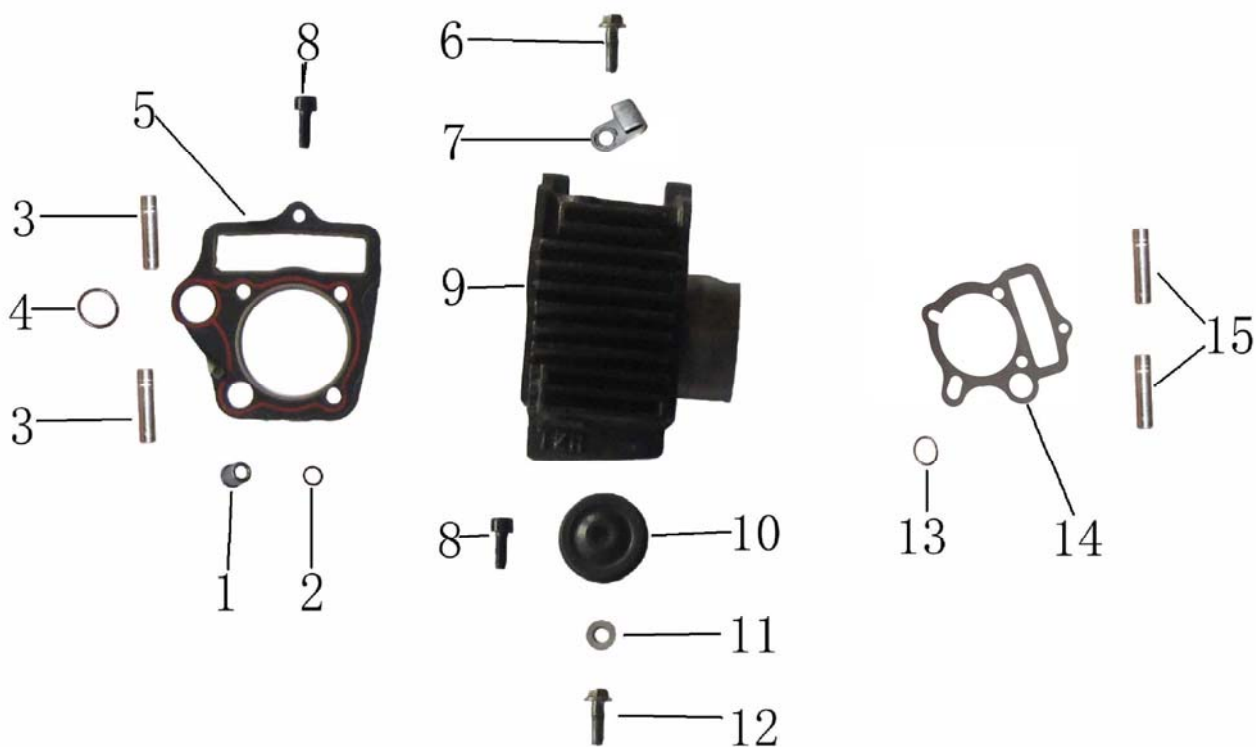


## 气缸头部件 CYLINDER HEAD ASSY



序	件号	中文名称	英文名称	数量	单价	
NO.	Code name	Chinese	Description	Q'ty	¥	\$
1	231006-0101	70缸头左右盖连接螺栓M6×110	BOLT M6×110	1		
2	231006-0102	GB16674小盘螺栓M6×20	BOLT M6×20	2		
3	231006-0103	70铝垫圈6.5×1×12	WASHER 6.5×1×12	1		
4	231006-0104	C100-2#气缸头右盖组合	RIGHT COVER, CYLINDER HEAD	1		
5	231006-0105	缸头排气口双头螺栓M6×32	BOLT M6×32	2		
6	231006-0106	C100火花塞部件(A7TC)	SPARK PLUG	1		
7	231006-0107	C110-1#气缸头组合(抛丸钝化)	CYLINDER HEAD ASSY	1		
8	231006-0108	70气门盖O形圈29.6×3.2	O-RING 29.6×3.2	1		
9	231006-0109	70气门室盖(抛丸钝化)	COVER, VALVE CHAMBER	1		
10	231006-0110	C100-2#气缸头左盖	LEFT COVER, CYLINDER HEAD	1		
11	231006-0111	C100气缸头上盖(抛丸钝化)	UPPER COVER, CYLINDER HEAD	1		
12	231006-0112	缸头盖铁垫圈7.3×2.5×14	WASHER 7.3×2.5×14	3		
13	231006-0113	C100缸头盖盖形螺母M6	NUT M6	4		
14	231006-0114	GB5783螺栓M6×25	BOLT M6×25	4		
15	231006-0115	90D进气管(JQ-4)	INLET PIPE	1		
16	231006-0116	缸头盖铜垫圈7.3×2.5×14	WASHER 7.3×2.5×14	1		

气缸体部件 CYLINDER ASSEMBLY



序	件号	中文名称	英文名称	数量	单价	
NO.	Code name	Chinese	Description	Q'ty	¥	\$
1	231006-0201	70反沿衬套9.5	BUSH 9.5	1		
2	231006-0202	70矩形密封圈 $\phi 8 \times 10.8 \times 1.5$	RECTANGLE RING $8 \times 10.8 \times 1.5$	1		
3	231006-0203	C100定位销 $8 \times 14 \times 7$	PIN $8 \times 14 \times 7$	2		
4	231006-0204	70矩形密封圈 $\phi 14 \times 18.2 \times 2.5$	RECTANGLE RING $14 \times 18.2 \times 2.5$	1		
5	231006-0205	C110气缸头密封垫组合	GASKET ASSY, CYLINDER HEAD	1		
6	231006-0206	GB16674小盘螺栓 $M6 \times 16$	BOLT $M6 \times 16$	1		
7	231006-0207	70高压线固定夹(兰白锌)	CLIP, HIGH VOLTAGE WIRE	1		
8	231006-0208	70缸体箱体连接螺栓 $M6 \times 23$	BOLT $M6 \times 23$	2		
9	231006-0209	C110气缸体部件(铸铁电泳黑)	CYLINDER BLOCK ASSEMBLY	1		
10	231006-0210	C110链条导向轮组合(45)	GUIDE CHAIN ROLLER SET	1		
11	231006-0211	70导向销轴铝垫圈 $8.5 \times 1.5 \times 14$	WASHER $8.5 \times 1.5 \times 14$	1		
12	231006-0212	70导向滚轮销轴(兰白锌)	GUIDE CHAIN ROLLER PIN	1		
13	231006-0213	70矩形密封圈 $\phi 11.5 \times 16 \times 2.5$	RECTANGLE RING $11.5 \times 16 \times 2.5$	1		
14	231006-0214	C110气缸体纸垫	GASKET, CYLINDER BLOCK	1		
15	231006-0215	缸体箱体连接定位销 $8 \times 12 \times 7$	PIN $8 \times 12 \times 7$	2		

## 配气机构 VALVE MECHANISM

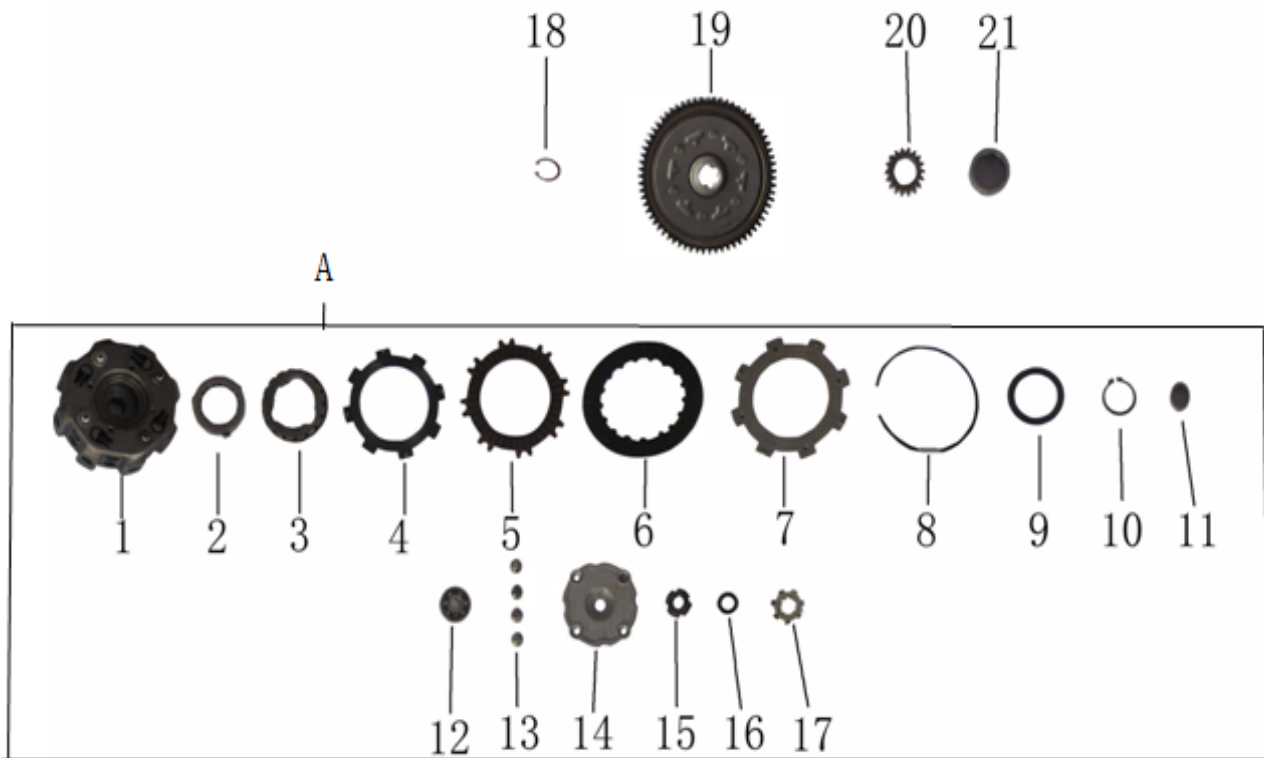


序 NO.	件 号 Code name	中文名称 Chinese	英文名称 Description	数量 Q' ty	单价	
					¥	\$
1	231006-0301	70气门锁夹	VALVE COTTER	4		
2	231006-0302	70气门弹簧座(上)	SPRING SEAT	2		
5	231006-0305	70-3#气门内外弹簧组合	INNER SPRING, ASSY	2		
6	231006-0306	70挡油罩组合	SEAL, VALVE STEM	2		
7	231006-0307	70进气门	INLET VALVE	1		
8	231006-0308	70排气门	EXHAUST VALVE	1		
12	231006-0312	70气门摇臂组合	ROCKER ARM ASSEMBLY, VALVE	2		
13	231006-0313	70气门摇臂轴	ROCKER SHAFT	2		
14	231006-0314	凸轮轴部件(轴承16003、16002)	GAMP SHAFT COMP	1		
15	231006-0315	70正时从动链轮	TIMING DRIVEN SPROCKET	1		
16	231006-0316	70正时链轮螺栓M5×12	BOLT M5×12	3		
17	231006-0317	70链条张紧臂组合	CHAIN ADJUSTING SET	1		
18	231006-0318	70链条张紧臂芯轴	AXLE, TENSIONER LEVER	1		
19	231006-0319	70链条张紧杆组合	CHAIN TYHT SET	1		
20	231006-0320	70链条张紧轮组合	LIFTER ASSY	1		
21	231006-0321	70链条张紧杆弹簧	SPRING	1		
22	231006-0322	密封螺塞铝垫圈14.5×1.5×20	WASHER 14.5×1.5×20	1		
23	231006-0323	70密封螺塞M14×1.5	SEALING PLUG M14×1.5	1		
24	231006-0324	张紧杆注油铝垫圈6.2×1.5×13	WASHER 6.2×1.5×13	1		
25	231006-0325	GB16674大盘螺栓M6×18	BOLT M6×18	1		
26	231006-0326	C100正时链条组合(84)	SPROKET CHAIN	1		





## 离合器总成 CLUTCH ASSY



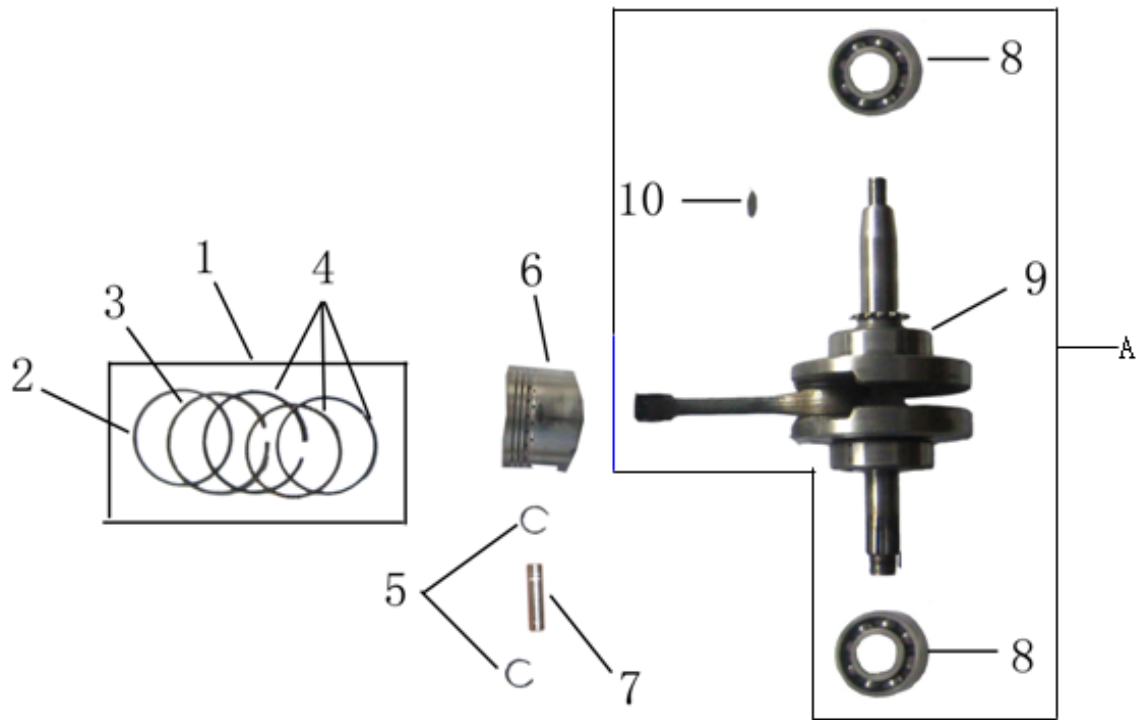
序	件号	中文名称	英文名称	数量	单价	
NO.	Code name	Chinese	Description	Q'ty	¥	\$
A	231006-0600	离合器总成	Clutch ASSY	1		
1	231006-0601	Z125-2#离合器主动盘组件	DRIVE PLATE COMP	1		
2	231006-0602	Z100离合器定心滑套	ALIGNING SLIDING BUSH	1		
3	231006-0603	Z125-2#离合器缓冲套	CLUTCH DASH POT SLIPCOVER	3		
4	231006-0604	Z125-2#离合器上板组合	CLUTCH TOP PLATE	1		
5	231006-0605	Z100离合器从动摩擦片	OUTER FRICTION DISK A	2		
6	231006-0606	Z100离合器主动摩擦片	DRIVE FRICTION DISK	1		
7	231006-0607	Z100离合器下板组合	CLUTCH BELOW PLATE	1		
8	231006-0608	70离合器挡圈	ELASTIC CHECK RING	1		
9	231006-0609	Z100离合器缓冲弹簧片	SHOCK ABSORBER PLATE	1		
10	231006-0610	GB894.1挡圈45	CIRCLIP 45	1		
11	231006-0611	70主动齿座圈衬套	SLEEVE	1		
12	231006-0612	轴承(6000)	BEARING (6000)	4		
13	231006-0613	GB819.2螺钉M5×12(白锌)	SCREW M5×12	1		
14	231006-0614	Z100离合器端盖	END COVER, CLUTCH	1		
15	231006-0615	70离合器锁紧螺母	LOCK NUT, CLUTCH	1		
16	231006-0616	70离合器碟形垫圈	DISH WASHER, CLUTCH	1		
17	231006-0617	Z100离合器端盖密封垫	GASKET, END COVER	1		
18	231006-0618	70主轴齿轮卡圈	CIRCLIP	1		
19	231006-0619	Z100从动齿组合	DRIVEN GEAR COMP	1		
20	231006-0620	Z100主动齿	PRIMARY DRIVE GEAR	1		
21	231006-0621	Z100主动齿轮轴套	AXLE SLEEVE	1		







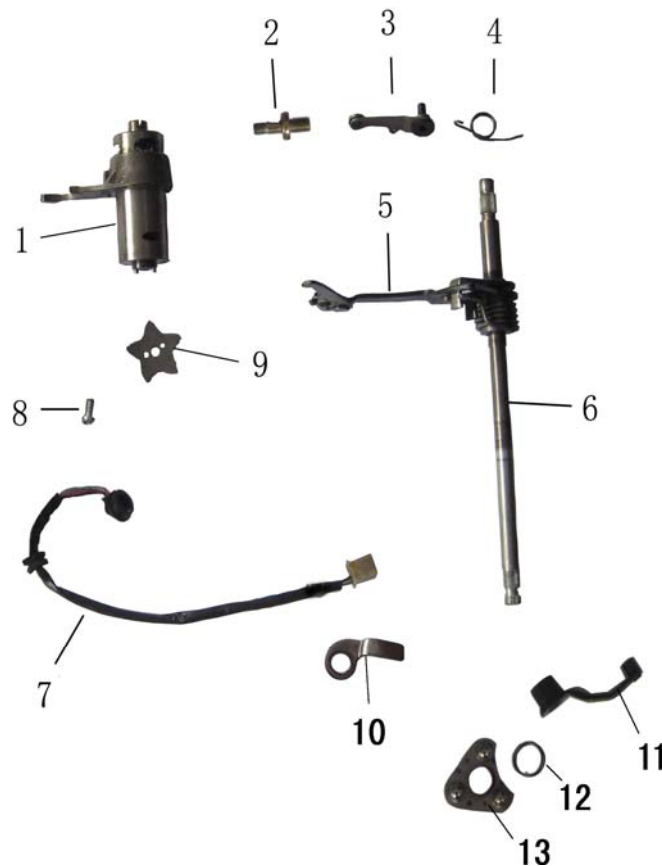
曲轴连杆部件/活塞 CRANKSHAFT CONNECTING-ROD ASSY/PISTON



序	件号	中文名称	英文名称	数量	单价	
NO.	Code name	Chinese	Description	Q'ty	¥	\$
1	231006-1001	GY6活塞环总成(110CC)	PISTON RING COMP	1		
2						
3						
4						
5	231006-1005	70活塞销挡圈	CHECK RING, PISTON PIN	2		
6	231006-1006	L110活塞	PISTON	1		
7	231006-1007	L110活塞销	PIN PISTON	1		
A	231006-A	100曲轴连杆总成	CONNECTING ROD COMP	1		
8	231006-1008	轴承(6304)	BEARING (6304)	2		
9	231006-1009	120曲轴连杆组合	CONNECTING ROD COMP 3	1		
10		70半圆键4×12.5	SEMICIRCULAR KEY	1		



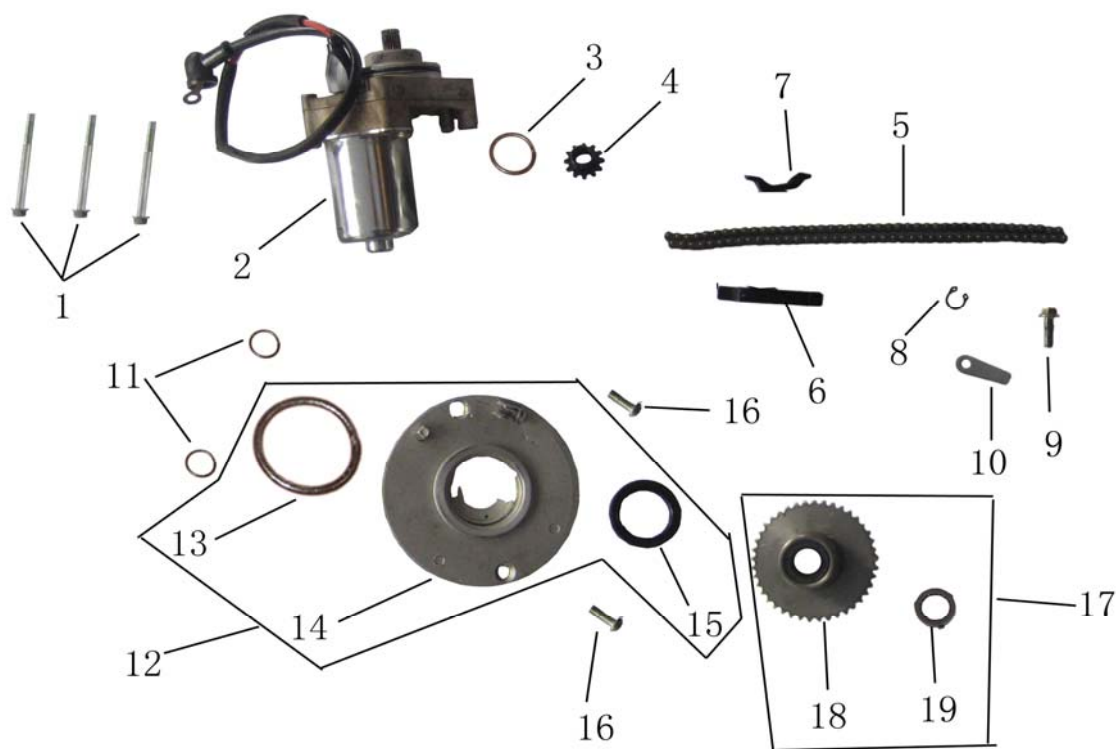




序	件号	中文名称	英文名称	数量	单价	
NO.	Code name	Chinese	Description	Q'ty	¥	\$
1和9	231006-1301	SD110变速鼓部件(倒档)	GEARSHIFT DRUM COMP	1		
	231006-1301	3+1变速鼓部件(倒档)	GEARSHIFT DRUM COMP	1		
2	231006-1302	70变档臂定位螺栓8×11	BOLT, RETURN SPRINGN FIXING 8×11	1		
3	231006-1303	S110定位板组合	LOCATING PLATE ASSY	1		
4	231006-1304	C100定位板弹簧	SPRING , LOCATING PLATE	1		
5	231006-1305	Z100换档臂臂体组合(四档循环)	LIMIT SCREW	1		
6	231006-1306	换档臂部件(260mm 四档循环档)	GEARSHIFT LEVER COMP	1		
7	231006-1307	档显线线束组合(3+1)	GEARSHIFT SWITCH LAMP	1		
8	231006-1308	GB823螺钉M6×12(白锌)	SCREW M6×12	1		
10	231006-1310	C100档位开关固定板(长压板)	GEARSHIFT SWITCH PRESSING PLATE	1		
11	231006-1311	Z100离合器操纵臂组合	CONTROLLING ARM ASSEMBLY, CLUTCH	1		
12	231006-1312	换档操纵臂弹簧		1		
13	231006-1313	Z100离合器凸轮板组合	CAM PLATE ASSEMBLY, CLUTCH	1		

磁电机总成 MAGNETO COMP

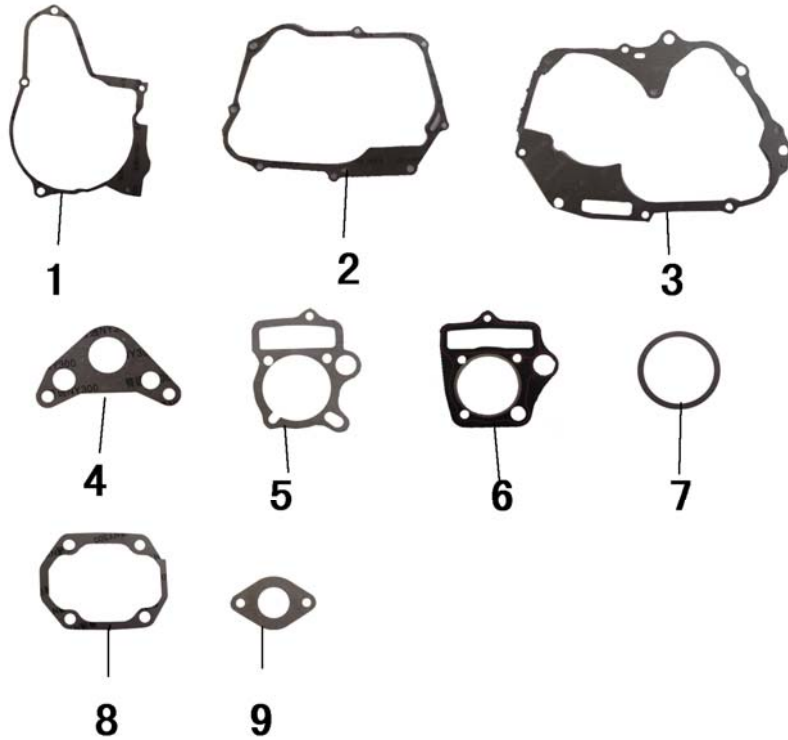




序 NO.	件 号 Code name	中文名称 Chinese	英文名称 Description	数量 Q' ty	单价	
					¥	\$
1	231006-0504	GB16674小盘螺栓M6×50	BOLT M6×50	3		
2	231006-1501	启动电机部件(双线L:220)	STARTING MOTOR ASSY	1		
3	231006-1502	启动电机O形密封圈52.5×2	O-RING 52.5×2	1		
4	231006-1503	C100启动电机小链轮	SPROCKET	1		
5	231006-1504	S125D启动链条组合(62节加厚)	STARTING MOTOR DRIVE CHAIN	1		
6	231006-1505	C100链条导板组合	ASSEMBLY, GUIDE PLATE	1		
7	231006-1506	C100链条护板组合	ASSEMBLY, CHAIN PROTECT PLATE	1		
8	231006-1507	GB894.1挡圈11	CIRCLIP 11	1		
9	231006-1508	GB5783螺栓M6×12(白锌)	BOLT M6×12	1		
10	231006-1509	C100启动链轮定位板	PLATE, START CLUTCH	1		
11	231006-1510	70定子盘O形圈6.5×1.8	O-RING 6.5×1.8	2		
12	231006-1511	C100隔油盘组件	DISK INSULATOR	1		
13	231006-1512	C100隔油盘O形圈106.8×2	O-RING 106.8×2	1		
14	231006-1513	C100隔油盘	DISK INSULATOR	1		
15	231006-1514	C100定子盘油封30×42×4.5	OIL SEAL 30×42×4.5	1		
16	231006-1515	GB819.1螺钉M6×16(白锌)	SCREW M6×16	2		
17	231006-1516	C100-7#启动大链轮组件	PLATE GEAR ASSY	1		
18	231006-1517	C100-7#启动大链轮组合	PLATE GEAR ASSY	1		
19	231006-1518	C100链轮油封19×30×5	OIL SEAL 19×30×5	1		

纸垫、隔热垫 GASKET 、 Anti-heat gasket



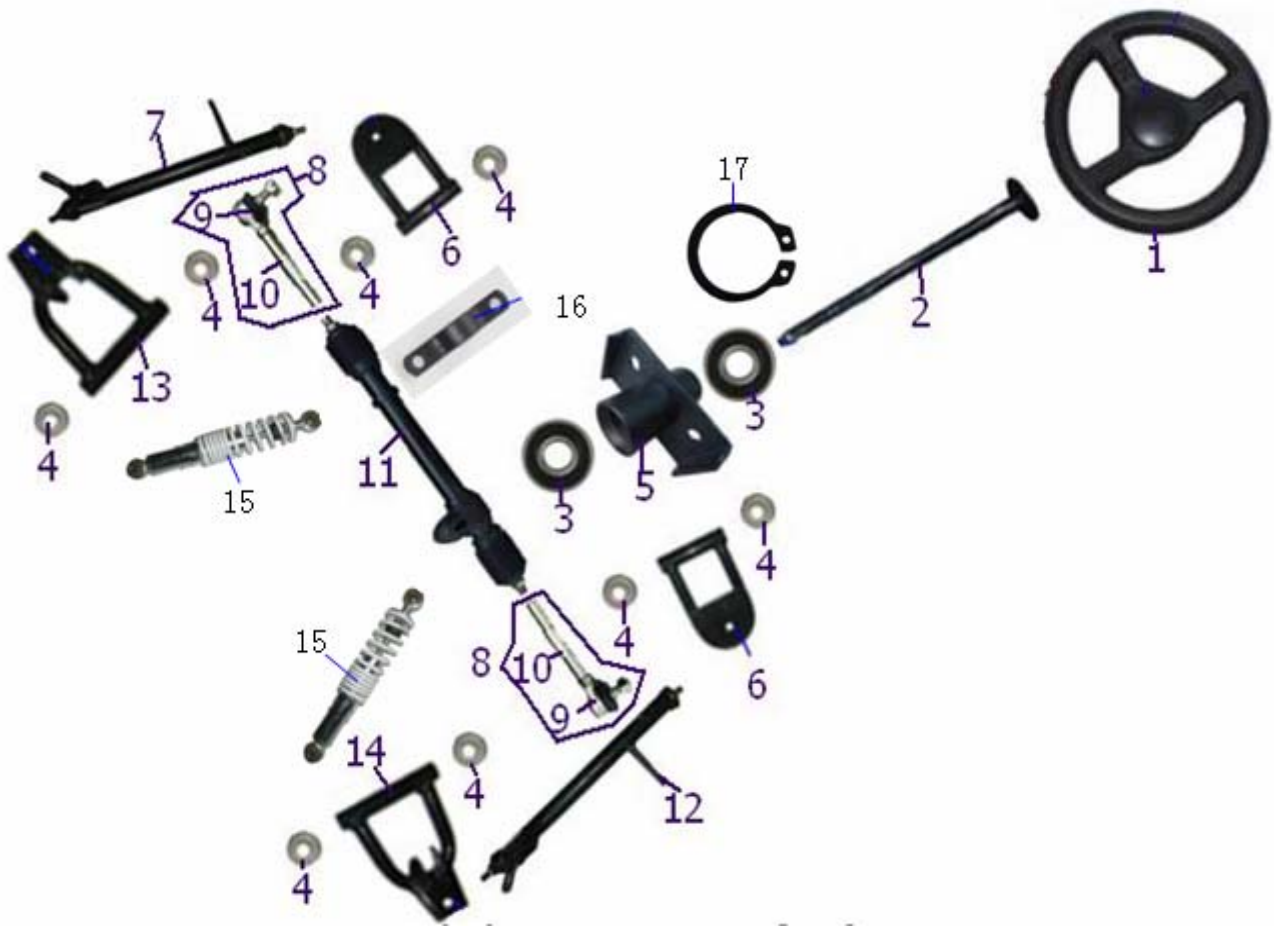


序	件号	中文名称	英文名称	数量	单价	
NO.	Code name	Chinese	Description	Q'ty	¥	\$
1	231006-1601	左前盖纸垫	Front Cover Gasket (L.)	1		
2	231006-1602	右箱体纸垫	Right Block Gasket	1		
3	231006-1603	中箱体纸垫	Middle Block Gasket	1		
4	231006-1604	缸头左侧纸垫	Cylinder Head Gasket (L.)	1		
5	231006-0214	110气缸体纸垫	110cc Cylinder Block Gasket(Aluminium)	1		
6	231006-0205	110气缸头密封垫组合	110cc Cylinder Head Gasket Assy (Aluminium)	1		
7	231006-1605	缸头右侧纸垫	Cylinder Head Gasket(R.)	1		
8	231006-1606	缸头盖纸垫	Cylinder Head Cover Gasket	1		
9	231006-1607	进气管纸垫	Intake Manifold Gasket	1		

车架、后托架 Frame and Engine carrier

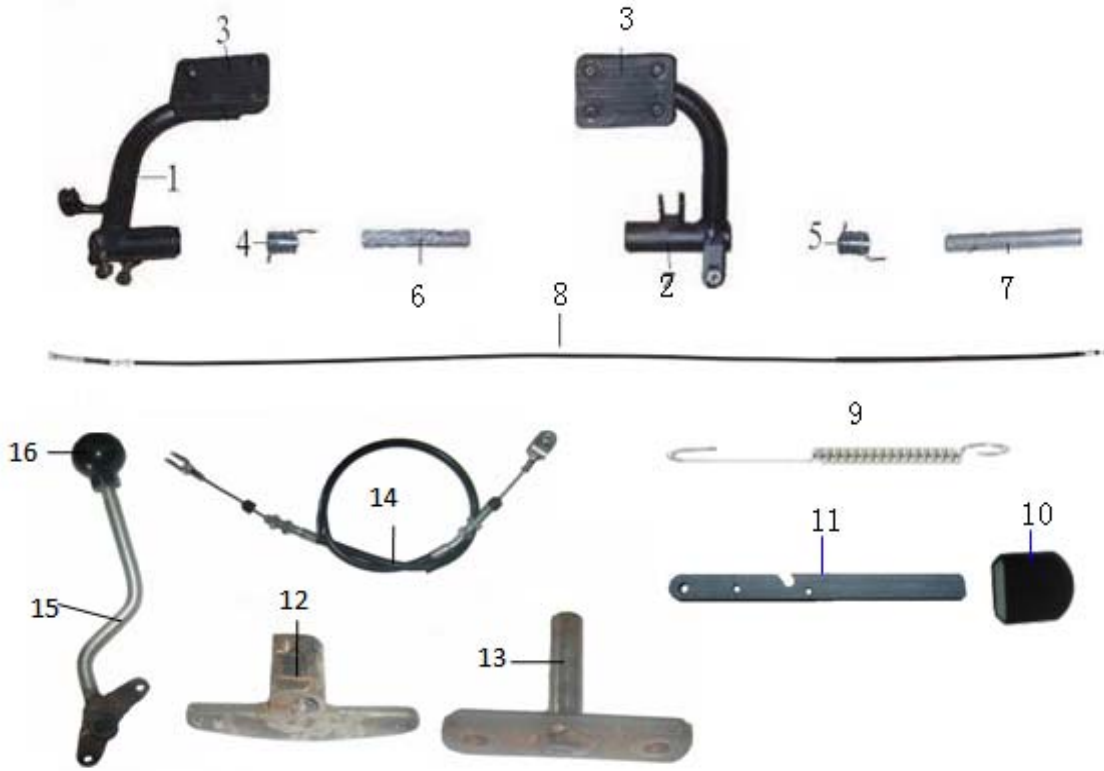






序	件号	中文名称	英文名称	数量	单价	
NO	Code name	Chinese	Description	Q'ty	¥	\$
1	02030018	方向盘 (小、带盖)	Steering Wheel	1		
2	02030218	方向把固定轴	Steering Wheel Fixture	1		
3	12030021	6903轴承	Bearing (6903)	2		
4	12020008	摇臂全铁防尘盖10*22*6	Steel Dust cover 10*22*6	8		
5	02011078	方向盘固定支架	Gimbal L: 420mm	1		
6	02011073	上摇臂组件	Upper Swing arm	2		
7	02030216	前转角右	Front steering angel (RH)	1		
8	02030217	转向拉杆 (总成、带球头)	Steering rod w/ balljoint	2		
9	12060015	球头	Ball Joint	2		
10	190373	转向拉杆L:160mm	Steering rod	2		
11	02030219	方向机	Steering machine	1		
12	02030215	前转角左	Front steering angel (RH)	1		
13	02011075	下摇臂组件右	Lower swing arm (RH)	1		
14	02011074	下摇臂组件左	Lower swing arm (LH)	1		
15	07010103	前减震	Front Shock	2		
16	02030015	方向机压板	Steering Machine Cover	2		
17	12050003	轴用卡簧17	Circlip 17	1		

踏板、换挡 Pedal and Gearshift

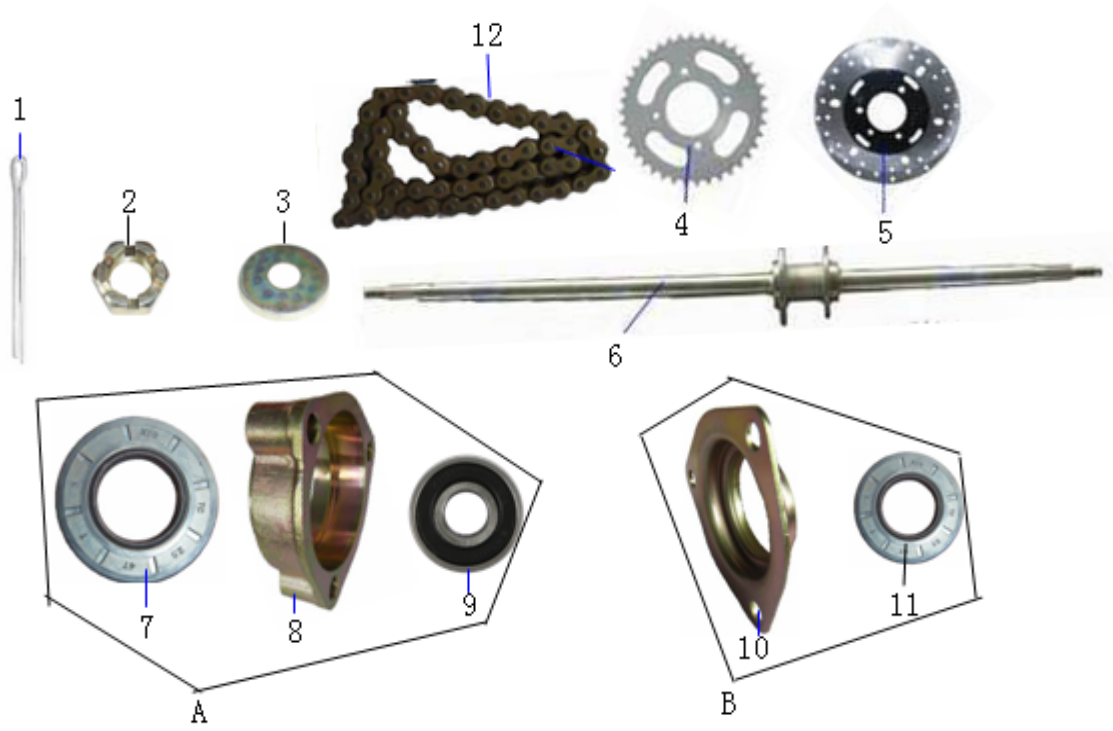


序	件号	中文名称	英文名称	数量	单价	
NO	Code name	Chinese	Description	Q'ty	¥	\$
1	02010815	油门踏板组件	Accelerator Pedal	1		
2	02010816	刹车踏板组件	Brake Pedal	1		
3	06990015	脚刹踏板防滑套	Brake Pedal Shoe	2		
4	07020025	油门踏板扭簧	Accelerator Pedal Torsional Spring	1		
5	07020026	脚刹踏板扭簧	Brake Pedal Torsional Spring	1		
6	02010324	油门杆内衬套	Accelerator Rod neck Bush	1		
7	02010326	刹车杆内衬套	Brake Rod neck Bush	1		
8	08020198	油门线	Throttle Cable	1		
9	07020007	刹车开关拉簧	Brake Switch Spring	1		
10	06990063	堵头	End Cap	1		
11	02010830	手刹器	Handbrake	1		
12	02011081	变档摇臂	Shift Rocker Arm Assy	1		
13	02011080	变档杆固定座		1		
14	08020215	换挡拉线	Gear Shift Cable	2		
15	02011079	变档杆组件	shift-level Assy	1		
16	06990017	手刹杆球头	Hand brake ball joint	1		

油箱 Fuel Tank







序	件号	中文名称	英文名称	数量	单价	
NO	Code name	Chinese	Description	Q'ty	¥	\$
1		开口销3.0*40	Pin 3.0*40	2		
2		开槽螺母M16	slotted nut M16	2		
3	12020007	轮毂全铁防尘盖	Tire Dust Cover	2		
4	02040011	链盘	key board	1		
5	04020003	碟刹盘	disc brake 160mm	1		
6	02040168	后轴	Rear axle	1		
A	02040170	轴承座组件	Bearing Seat	2		
7	12040017	油封40*28*7	Oil Seal 40*28*7	2		
8	02040174	轴承座	bearing pedestal	2		
9	12030015	轴承6205	Bearing (6205)	2		
B	02040169	轴承座防尘盖组件	dust cover of the bearing pedestal	2		
10	02040173	轴承座防尘盖	dust cover of the bearing pedestal	2		
11	12040016	油封40*25*7	Oil seal 40*25*7	2		
12	02040171	链条420-54	Chain 420-54	1		

电器、开关、电缆 Electrical componets and switches









